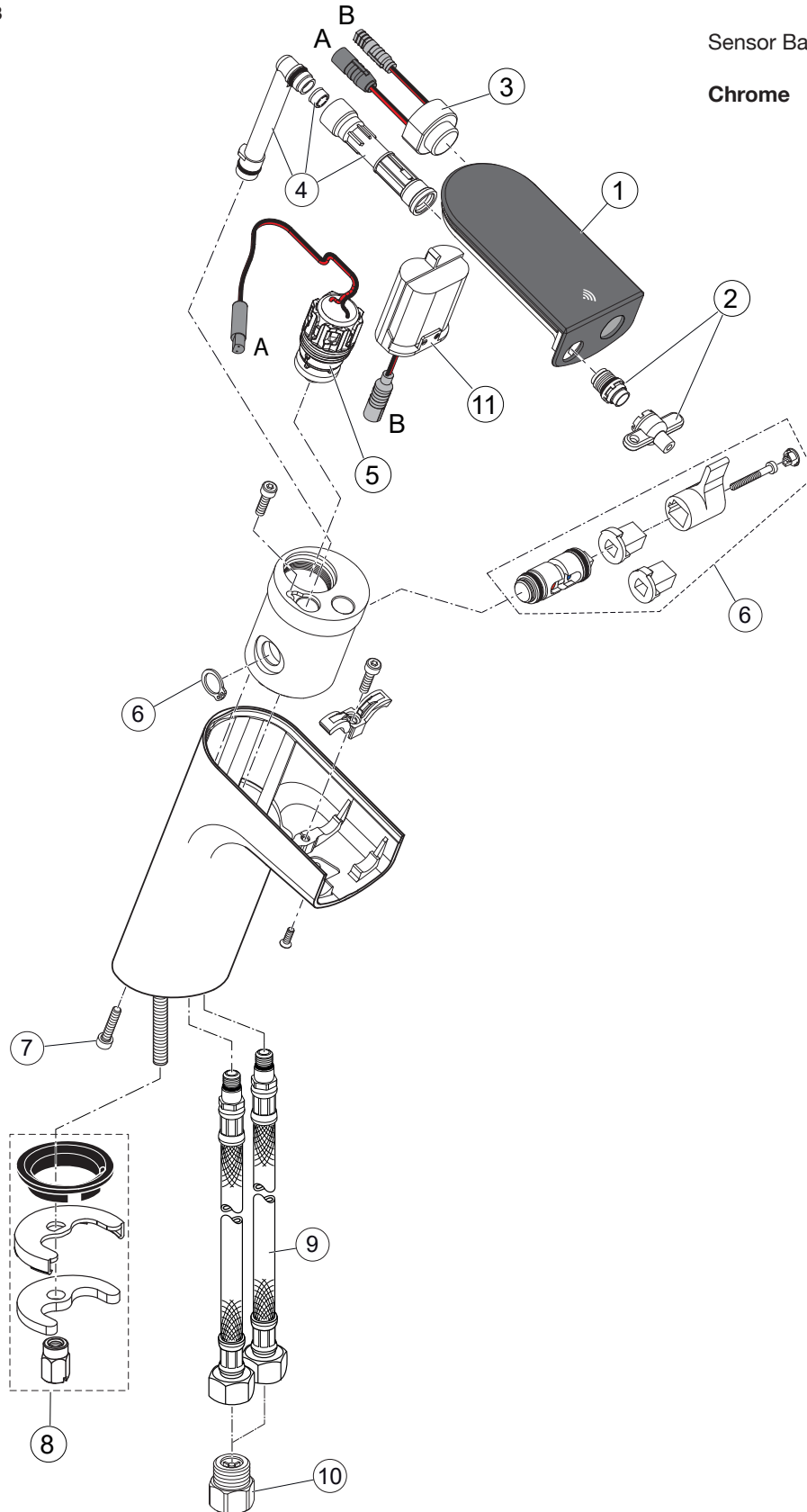


Produced from: May 2023

Sensor Basin Electronic
Chrome **A7857AA**



Replace XX with the appropriate finish code
 Chrome = AA Onyx Black = B3

Example spare part order:
A 861 681 AA in Chrome

Pos.	Description	Part-Number	Qty.	Pos.	Description	Part-Number	Qty.
1	Acryl Cover cpl.	A 861 534 NU	1 Set	8	Fixation set	A 960 001 NU*	1 Set
2	Flowregulator with Key	A 861 531 NU	1 Set	9	Flex. hose M10x1/450-G3/8	A 860 794 NU	1 pcs
3	IR Sensor	A 861 702 NU	1 pcs	10	Check valve G 3/8 cpl.	B 960 844 NU	2 Set
4	Connection pipe	A 861 680 NU	1 Set	11	Battery case	A 861 617 NU	1 Set
5	Solenoidvalve 6V G1/2	F 961 050 NU	1 pcs		Battery 6V CR-P2	A 960 161 NU	1 pcs
6	Pre-Mixer cpl.	A 861 681 XX	1 Set				
7	Screw M4X20 Din 912	A 962 268 NU	4 pcs				

** Universal-Set (not all parts needed)*